

Master Calendar

How to install NetExtender

This document details the steps to installing the Sonic Wall NetExtender for VPN access to campus systems from off-campus or over a wireless network on-campus. Some systems, such as Banner and the sdrive, require this VPN connection. In addition to installing this software, a user must also be authorized by either a system administrator or a network administrator to connect via VPN.

- Open site: <https://fitsa.fit.edu> (Note that Mac users must do this in Safari.)



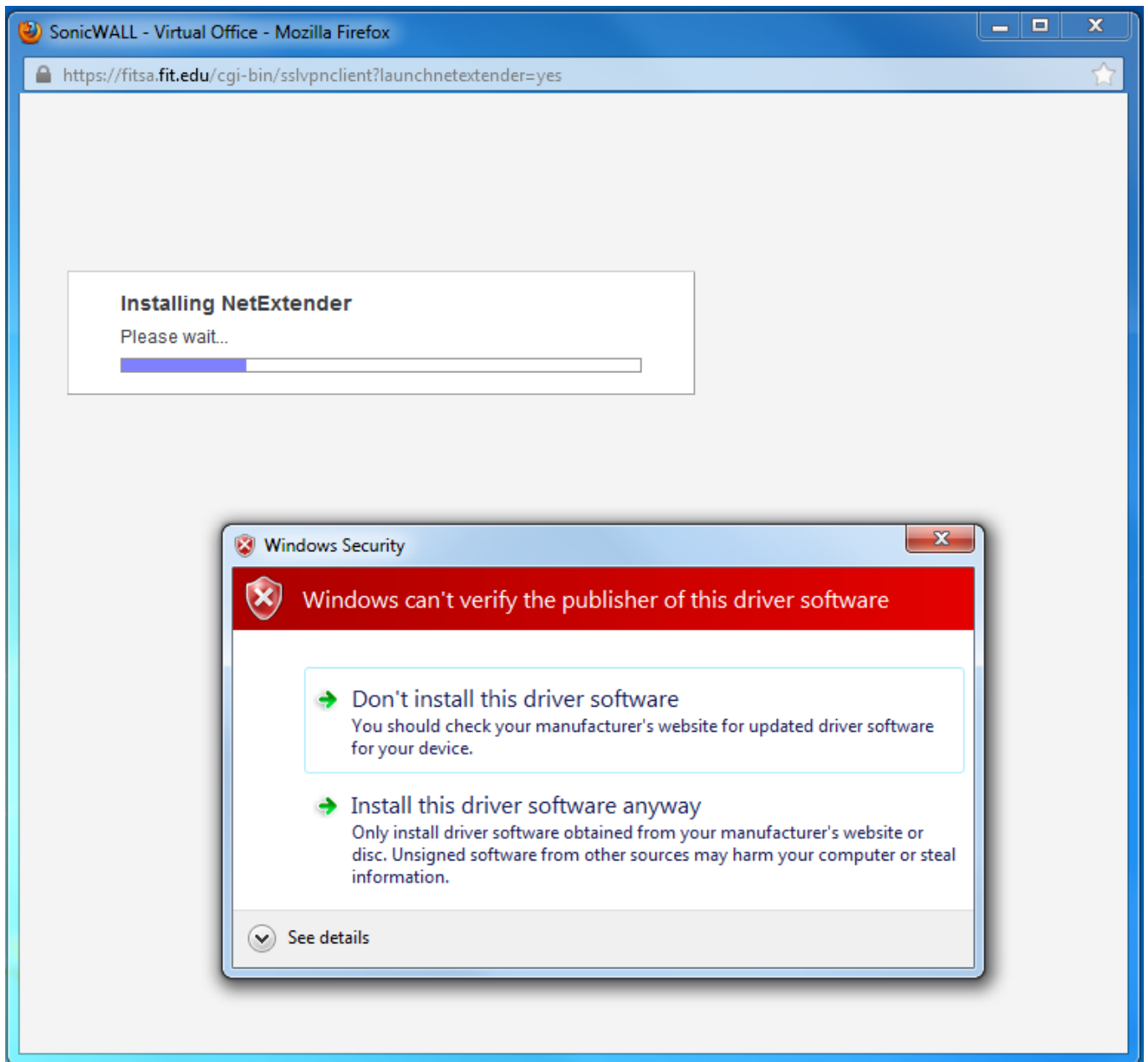
The image shows a screenshot of the SonicWall SSL-VPN Login page. The page has a dark blue header with the SonicWall logo on the left and the text "SSL-VPN Login" on the right. Below the header is a white area with a decorative wavy pattern. The login form includes fields for Username, Password, and Domain (set to fit.edu), and a Login button.

- Login with Tracks username and password.

Note that these directions are for PCs running Windows. For Mac users, please [Click Here](#)

- Select the Blue N icon to begin installing NetExtender. It will ask for you permission to install the add-on in FireFox so allow it.
- After installing the add-on, it will ask you to restart the browser. Click on the restart button.
- Select the Blue N icon again. A new window should pop up along with another one asking you permission to install the driver.

Master Calendar



- Select install this driver software anyway.
- Once complete, a notification in the bottom right corner of the screen should appear showing the computer is connected in NetExtender.

For Macs:

- Once you have logged in, click on the Blue N icon. Two windows should appear after clicking on the icon.

Master Calendar



- Please click on the Allow button to continue the installation process.
- Once that is completed, a new window should pop up saying you are logged into NetExtender.

The user should be able to access FIT site services such as Banner.

Unique solution ID: #1046

Author: Eric Donath

Last update: 2012-11-20 01:00